

REDISTRIBUTION OF LEGISLATIVE COUNCIL ELECTORAL BOUNDARIES

Initial Redistribution Proposal

Pursuant to Section 15 of the *Legislative Council Electoral Boundaries Act 1995* we, the Redistribution Committee, give notice of, and invite public attention to, our initial redistribution proposal for the redistribution of the State's 15 electoral divisions.

Maps showing names and boundaries of proposed divisions, together with copies of the reasons for the initial redistribution proposal and descriptions of proposed boundaries, are exhibited at our public offices, where they are also available for perusal and supply. Information is also available on the electoral redistribution website - www.lcredistribution.tas.gov.au.

For the purposes of this redistribution the Tasmanian Electoral Commission and all Service Tasmania shopfronts have been designated as public offices.

Comments, suggestions or objections

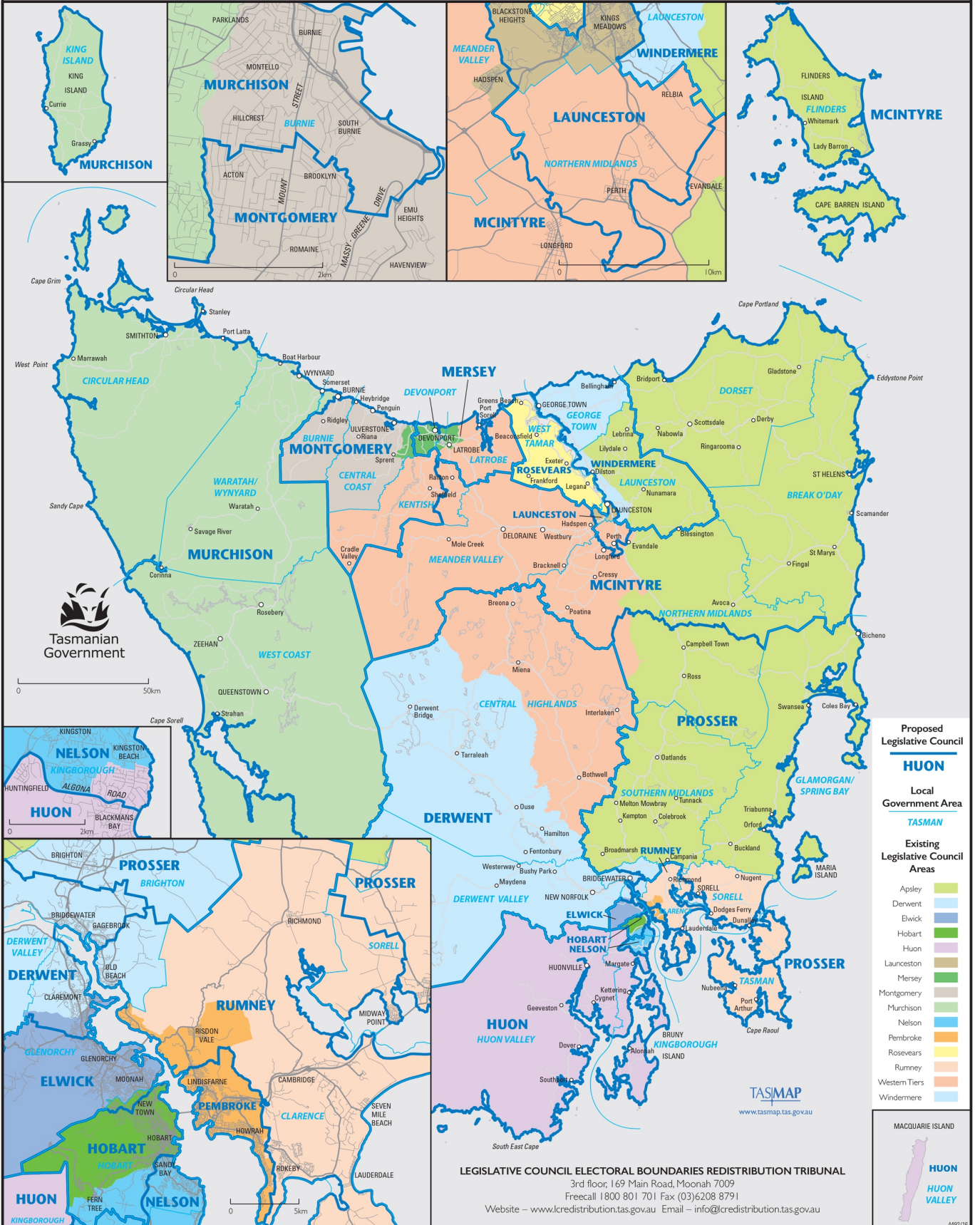
Within the period of 28 days after this publication, a person or organisation may lodge with the Redistribution Tribunal a written comment, suggestion or objection in relation to the Initial Redistribution Proposal.

Where practicable, the redistribution secretariat will make computer software and a trained operator available during the period for comments, suggestions and objections, to assist those wishing to make written submissions. Appointments may be made through the executive officer.

Andrew Hawkey - Chairperson of the Redistribution Committee
Saturday 28 January 2017



NOTE: Elections for the Divisions of Launceston, Murchison and Rummy in May 2017 will be conducted on the basis of existing boundaries.



Proposed Legislative Council

HUON

Local Government Area

TASMAN

Existing Legislative Council Areas

- Apsey
- Derwent
- Elwick
- Hobart
- Huon
- Launceston
- Mersey
- Montgomery
- Murchison
- Nelson
- Pembroke
- Rosevears
- Rumney
- Western Tiers
- Windermere

